



rtc[®]

COUPLING TECHNOLOGY
[www.rtc-tec.com](http://www rtc-tec.com)



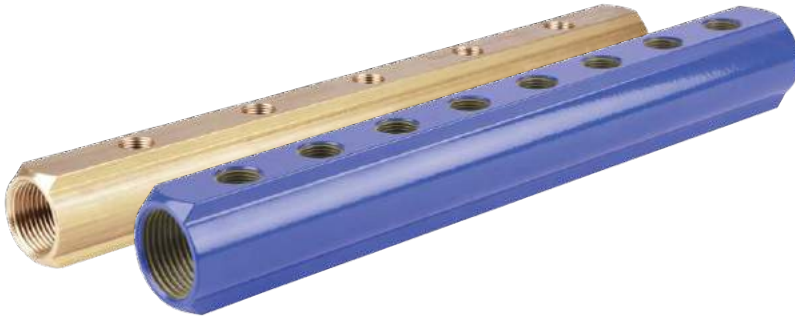
COLLECTORS

117-118

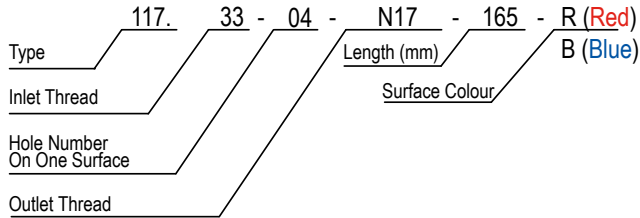
rtc TYPE



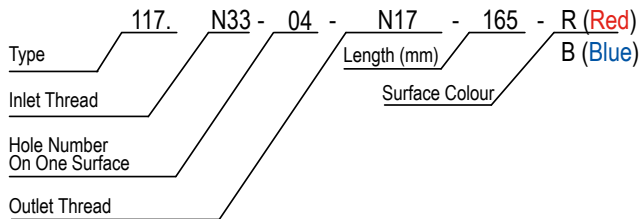
rtc 117 BRASS COLLECTORS



rtc 117 BSP THREAD (Standart Brass Collectors)



rtc 117 NPT THREAD (Brass Collectors)



Thread Size Explanations

- BSP=G
- NPT=N
- (1/4" = 13)
- (3/8" = 17)
- (1/2" = 21)
- (3/4" = 26)
- (1" = 33)
- (1-1/4" = 42)
- (1-1/2" = 48)
- (2" = 60)

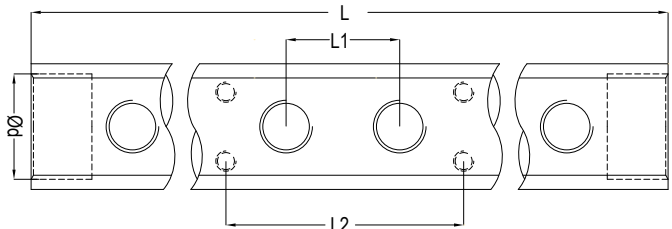
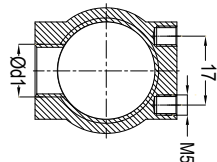


Collector Carrier

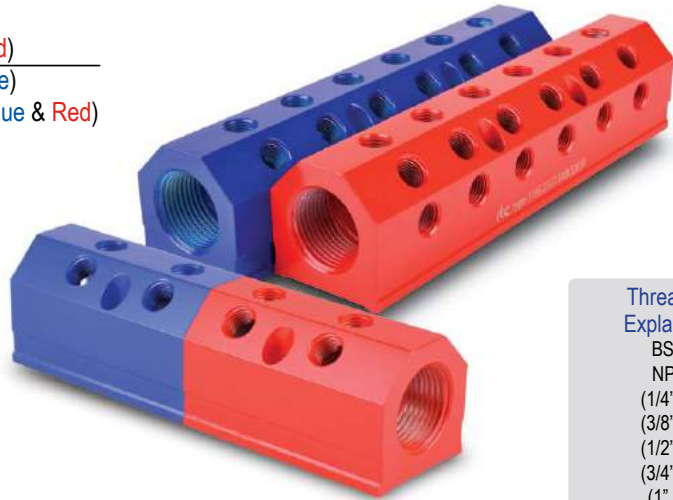
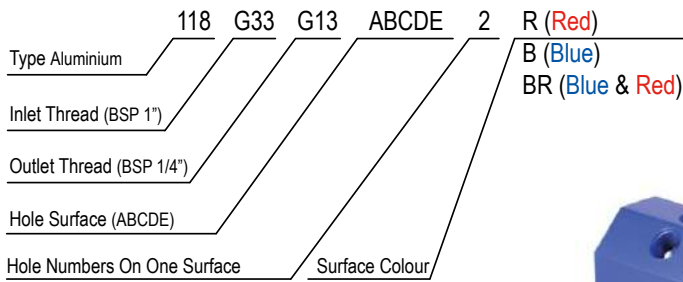
Order No:

117 CC 70 - (For 117.26 & 117.33)

117 CC 90 - (For 117.42)

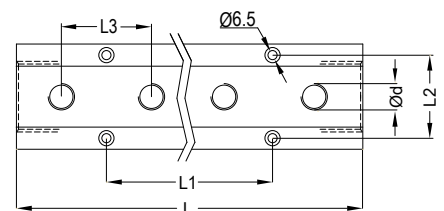
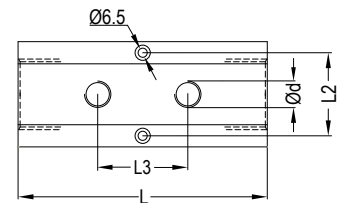
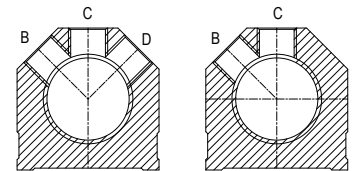
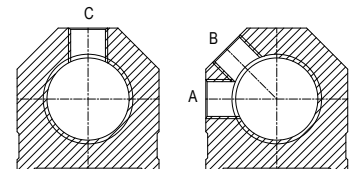
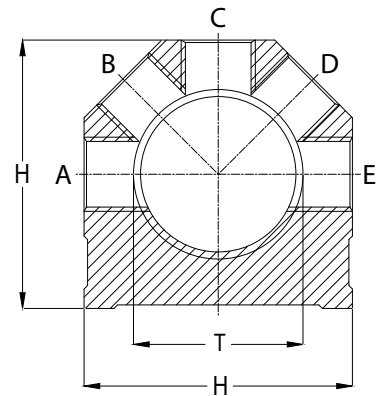


Ød	Order No / Bestellnr.	Ød1	L	L1	L2				
3/4	117.26-04-13-150	1/4	150	30					
	117.26-05-13-180		180						
	117.26-06-13-210		210						
	117.26-07-13-240		240						
	117.26-08-13-270		270						
	117.26-09-13-300		300						
	117.26-10-13-330		330						
	117.26-11-13-360		360						
	117.26-12-13-390		390						
	3/4		117.26-04-17-165			3/8	165	30	
			117.26-05-17-200				200		
			117.26-06-17-235				235		
			117.26-07-17-270				270		
			117.26-08-17-305				305		
117.26-09-17-340		340							
117.26-10-17-375		375							
117.26-11-17-410		410							
117.26-12-17-445		445							
1		117.33-04-13-165	1/4	165	70				
	117.33-05-13-200	200							
	117.33-06-13-235	235							
	117.33-07-13-270	270							
	117.33-08-13-305	305							
	117.33-09-13-340	340							
	117.33-10-13-375	375							
	117.33-11-13-410	410							
	117.33-12-13-445	445							
	1	117.33-04-17-165		3/8		165		35	
		117.33-05-17-200				200			
		117.33-06-17-235				235			
117.33-07-17-270		270							
117.33-08-17-305		305							
117.33-09-17-340		340							
117.33-10-17-375		375							
117.33-11-17-410		410							
117.33-12-17-445		445							
1		117.33-04-21-210	1/2		210	40			
		117.33-05-21-260			260				
		117.33-06-21-310			310				
	117.33-07-21-360	360							
	117.33-08-21-410	410							
	117.33-09-21-460	460							
	117.33-10-21-510	510							
	117.33-11-21-560	560							
	117.33-12-21-610	610							
	117.33-16-21-810	810							
	117.33-20-21-1010	1010							
	1-1/4	117.42-04-17-196		3/8	196			40	
117.42-05-17-236		236							
117.42-06-17-276		276							
117.42-08-17-356		356							
117.42-10-17-436		436							
117.42-12-17-516		516							
117.42-16-17-676		676							
1-1/4		117.42-04-21-226	1/2		226	50	150		
		117.42-05-21-276			276				
		117.42-06-21-326			326				
		117.42-07-21-376			376				
		117.42-08-21-426			426				
	117.42-10-21-526	526							
117.42-12-21-626	626								

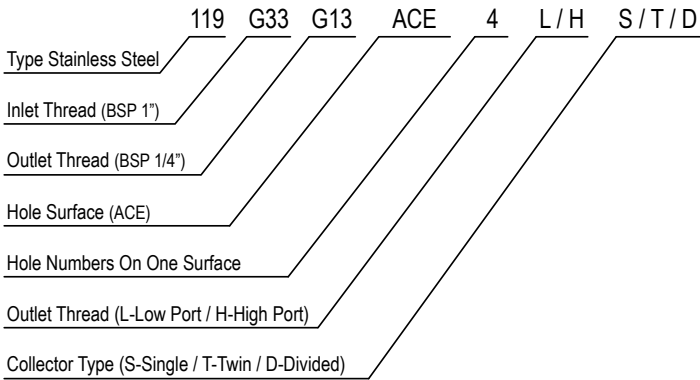


Thread Size Explanations
 BSP=G
 NPT=N
 (1/4" = 13)
 (3/8" = 17)
 (1/2" = 21)
 (3/4" = 26)
 (1" = 33)
 (1-1/4" = 42)
 (1-1/2" = 48)
 (2" = 60)

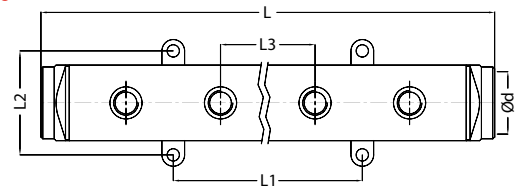
T Inlet Thread	Ød Outlet Thread	Number of Holes on one Surface	L	L1	L2	L3	H
3/4	1/4	2	74	0	35	31	44.5
		4	132	62			
		6	194	124			
		8	256	186			
	3/8	2	90	0	35	40	
		4	165	80			
		6	245	160			
		8	325	240			
1	1/4	2	103	0	38	40	51
		4	183	80			
		6	263	160			
		8	343	240			
	3/8	2	123	0	38	40	
		4	210	100			
		6	290	180			
		8	370	260			
1-1/4	1/4 - 3/8 - 1/2	2	152	0	50	51	66
		4	254	101.6			
		6	355	203.2			
		8	457	304.8			
1-1/2	3/8 - 1/2	2	152	0	50	51	
		4	254	101.6			
		6	355	203.2			
		8	457	304.8			
2	3/8 - 1/2 - 3/4	2	178	0	72.5	63.5	89
		4	305	127			
		6	432	254			
		8	559	381			



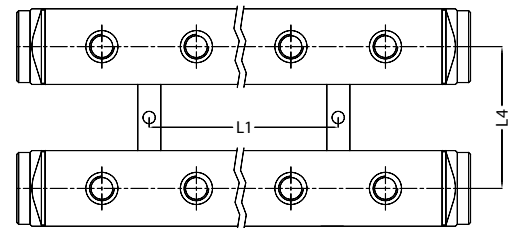
rtc 119 STAINLESS STEEL COLLECTORS



Single Profile



Twin Profile



Code Examples

- 119G33G13ACE4LS - Single Profile Low Port
- 119G33G13ACE4HS - Single Profile High Port
- 119G33G13ACE4LT - Twin Profile Low Port
- 119G33G13ACE4HT - Twin Profile High Port
- 119G33G13ACE4LD - Divided Profile Low Port
- 119G33G13ACE4HD - Divided Profile High Port

Thread Size

- BSP=G
- NPT=N
- (1/4" = 13)
- (3/8" = 17)
- (1/2" = 21)
- (3/4" = 26)
- (1" = 33)

T Inlet Thread	Ød Outlet Thread	Number of Holes on one Surface	L	L1	L2	L3	L4	H
1	1/4 - 3/8	2	140	0	55	50	75	40
		4	240	100				
		6	340	200				
		8	440	300				
1-1/4	1/4 - 3/8 - 1/2	2	140	0	65	50	90	50
		4	240	100				
		6	340	200				
		8	440	300				
1-1/2	1/4 - 3/8 - 1/2	2	140	0	65	50	100	50
		4	240	100				
		6	340	200				
		8	440	300				

High Port

Low Port

